



GRID

LANDS OF  
KHT LAND HOLDINGS LIMITED  
(FUTURE DEVELOPMENT)

SIR KENNEDY SIMMONDS HIGHWAY

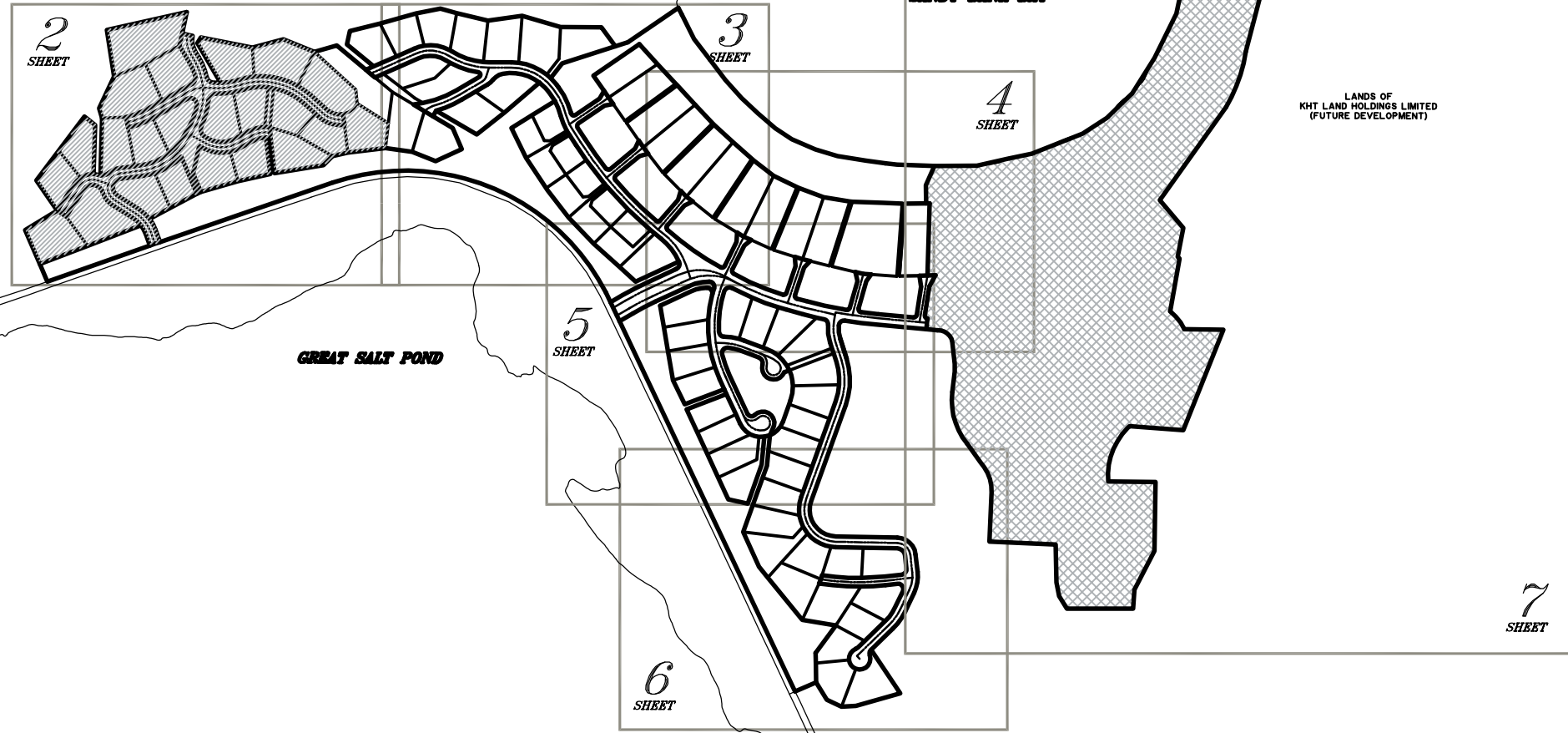
GREAT SALT POND

SANDY BANK BAY

LANDS OF  
KHT LAND HOLDINGS LIMITED  
(FUTURE DEVELOPMENT)

LANDS OF  
KHT LAND HOLDINGS LIMITED  
(FUTURE DEVELOPMENT)

SIR KENNEDY SIMMONDS HIGHWAY



- NOTES:**
1. ALL DISTANCES SHOWN ARE GROUND. GROUND TO GRID SCALE FACTOR: 0.999615.
  2. THE MEAN HIGH WATER LINE SHOWN HEREON IS REFERENCED TO THE VERTICAL DATUM "LOCAL BENCHMARK" MHWL = 0.72' (LOCAL BENCHMARK).
  3. ALL LOT CORNERS AND RIGHTS-OF-WAY P.C.'S AND P.T.'S ARE TO BE WITNESSED BY CONCRETE MONUMENTS WHEREVER FEASIBLE. 5/8" REBAR, STABILIZED BY CONCRETE, IS TO BE USED OTHERWISE.
  4. ALL EASEMENTS SHOWN HEREON, INCLUDING, BUT NOT LIMITED TO DRAINAGE AND UTILITY EASEMENTS, ARE GRANTED AND/OR RESERVED UNTO CHRISTOPHE HARBOUR DEVELOPMENT COMPANY LIMITED, ITS SUCCESSORS, ASSIGNS AND/OR DESIGNEES, AND/OR OTHER DESIGNATED PARTIES AS SET FORTH IN AND PURSUANT TO THE DECLARATION OF COVENANTS, CONDITIONS AND RESTRICTIONS FOR CHRISTOPHE HARBOUR (THE "MASTER COVENANTS") AND THE OTHER GOVERNING DOCUMENTS (AS DEFINED IN THE MASTER COVENANTS), AS THEY MAY BE MODIFIED, AMENDED AND/OR SUPPLEMENTED FROM TIME TO TIME.
  5. IN ACCORDANCE WITH THE MASTER COVENANTS AND THE OTHER GOVERNING DOCUMENTS, AS THEY MAY BE MODIFIED, AMENDED AND/OR SUPPLEMENTED FROM TIME TO TIME, ALL IMPROVEMENT SETBACKS, BUILDING ENVELOPES AND SINGLE STORY STRUCTURE ZONES SHOWN HEREON RESPECTING LOTS ARE SUBJECT TO CHANGE AND ALTERATION BY THE CHRISTOPHE HARBOUR DESIGN REVIEW BOARD TO ACCOMMODATE INDIVIDUAL HOME DESIGNS AND HOMESITE CHARACTERISTICS.

- LEGEND**
- CALCULATED POINT (NO MONUMENT SET)
  - △ PROPERTY CORNER AT MEAN HIGH WATER (NO MONUMENT SET)
  - PROPERTY CORNER TO BE SET (5/8" REBAR, STABILIZED WITHIN CONCRETE, OR 4" CONCRETE MONUMENT)
  - IS IMPROVEMENT SETBACK
  - BE BUILDING ENVELOPE
  - SSSZ SINGLE STORY STRUCTURE ZONE
  - RAD. RADIUS
  - ESMT. EASEMENT
  - HILLSIDE LOTS
  - RESIDUAL TRACT 3

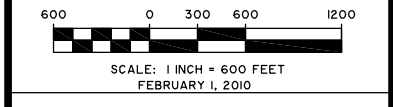
**LAYOUT ACREAGE TABLE**

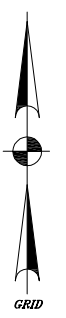
HILLSIDE LAYOUT		22 RESIDENTIAL LOTS
RESIDENTIAL LOTS:	12.00 ACRES	
DEVELOPMENT R/W:	2.41 ACRES	
OTHER LANDS:	0.07 ACRES	
<b>SUBTOTAL:</b>	<b>14.48 ACRES</b>	
SANDY BANK BAY LAYOUT		73 RESIDENTIAL LOTS
RESIDENTIAL LOTS:	33.88 ACRES	
DEVELOPMENT R/W:	7.03 ACRES	
OTHER LANDS:	18.79 ACRES	
<b>SUBTOTAL:</b>	<b>59.70 ACRES</b>	
RESIDUAL TRACT 3		39.07 ACRES
<b>COMBINED TOTAL</b>		<b>95 RESIDENTIAL LOTS</b>
RESIDENTIAL LOTS:	45.84 ACRES	
DEVELOPMENT R/W:	9.44 ACRES	
OTHER LANDS:	57.93 ACRES	
<b>TOTAL AREA THIS PLAT:</b>	<b>115.25 ACRES</b>	

SURVEYED BY:  
DWIGHT C. FRANCIS  
LICENSED LAND SURVEYOR  
ST. KITTS & NEVIS

A SUBDIVISION PLAN OF  
**SANDY BANK BAY**  
PHASE 1  
SHOWING  
**95 RESIDENTIAL LOTS**

SANDY BANK BAY  
ST. KITTS PENINSULA RESORT DISTRICT  
ST. KITTS, WEST INDIES  
PREPARED FOR:  
**CHRISTOPHE HARBOUR  
DEVELOPMENT COMPANY LIMITED**





GRID



NOTES:

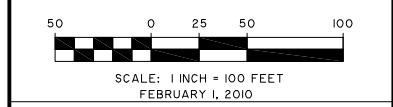
1. ALL DISTANCES SHOWN ARE GROUND. GROUND TO GRID SCALE FACTOR: 0.999615.
2. THE MEAN HIGH WATER LINE SHOWN HEREON IS REFERENCED TO THE VERTICAL DATUM "LOCAL BENCHMARK." MHWL = 0.72' (LOCAL BENCHMARK).
3. ALL LOT CORNERS AND RIGHTS-OF-WAY P.C.'S AND P.T.'S ARE TO BE WITNESSED BY CONCRETE MONUMENTS WHEREVER FEASIBLE. 5/8" REBAR, STABILIZED BY CONCRETE, IS TO BE USED OTHERWISE.
4. ALL EASEMENTS SHOWN HEREON, INCLUDING, BUT NOT LIMITED TO DRAINAGE AND UTILITY EASEMENTS, ARE GRANTED AND/OR RESERVED UNTO CHRISTOPHE HARBOUR DEVELOPMENT COMPANY LIMITED, ITS SUCCESSORS, ASSIGNS AND/OR DESIGNEES, AND/OR OTHER DESIGNATED PARTIES AS SET FORTH IN AND PURSUANT TO THE DECLARATION OF COVENANTS, CONDITIONS AND RESTRICTIONS FOR CHRISTOPHE HARBOUR (THE "MASTER COVENANTS") AND THE OTHER GOVERNING DOCUMENTS (AS DEFINED IN THE MASTER COVENANTS), AS THEY MAY BE MODIFIED, AMENDED AND/OR SUPPLEMENTED FROM TIME TO TIME.
5. IN ACCORDANCE WITH THE MASTER COVENANTS AND THE OTHER GOVERNING DOCUMENTS, AS THEY MAY BE MODIFIED, AMENDED AND/OR SUPPLEMENTED FROM TIME TO TIME, ALL IMPROVEMENT SETBACKS, BUILDING ENVELOPES AND SINGLE STORY STRUCTURE ZONES SHOWN HEREON RESPECTING LOTS ARE SUBJECT TO CHANGE AND ALTERATION BY THE CHRISTOPHE HARBOUR DESIGN REVIEW BOARD TO ACCOMMODATE INDIVIDUAL HOME DESIGNS AND HOMESITE CHARACTERISTICS.

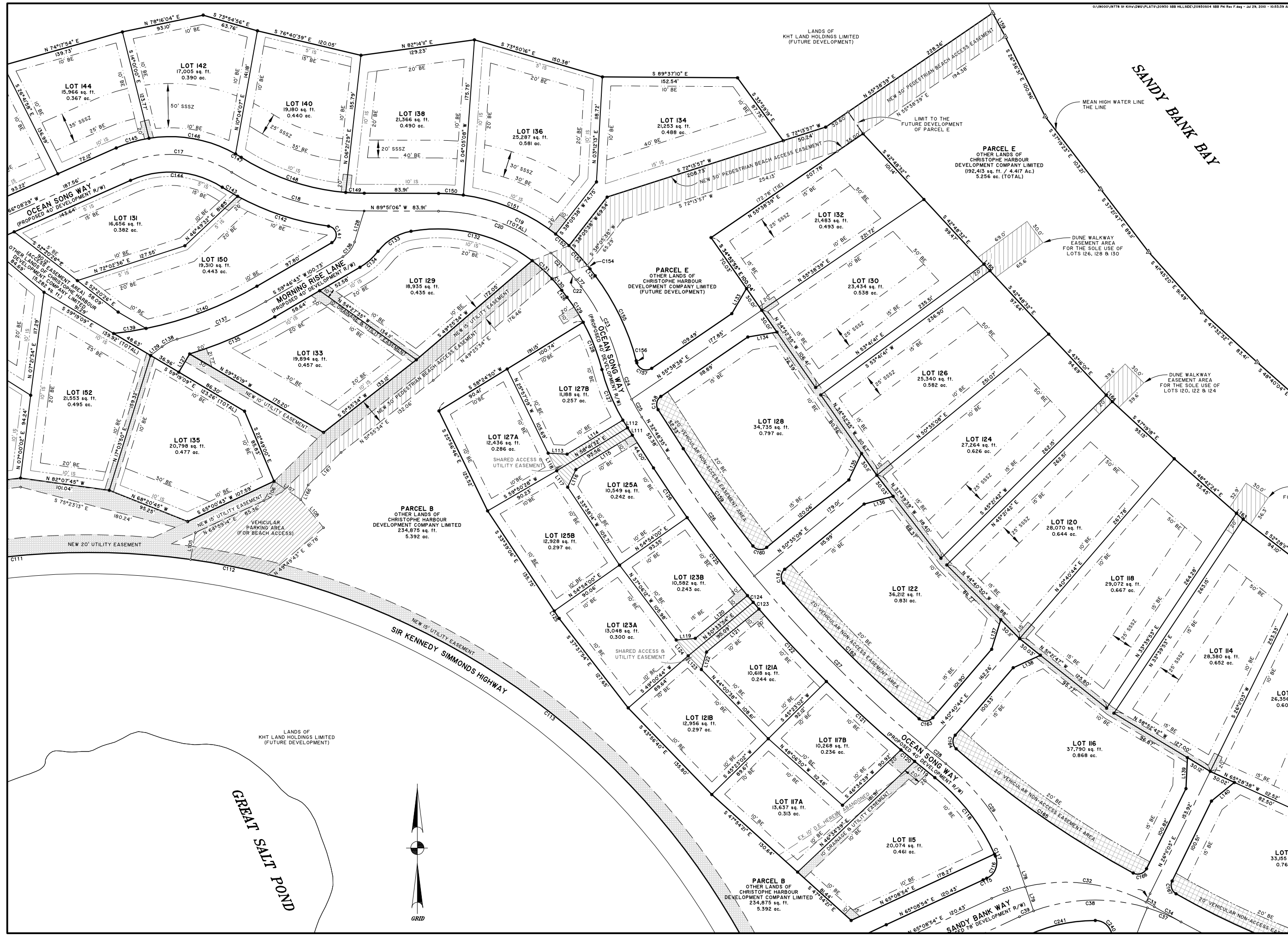
- LEGEND
- CALCULATED POINT (NO MONUMENT SET)
  - △ PROPERTY CORNER AT MEAN HIGH WATER (NO MONUMENT SET)
  - PROPERTY CORNER TO BE SET (5/8" REBAR, STABILIZED WITHIN CONCRETE, OR 4" CONCRETE MONUMENT)
  - IMPROVEMENT SETBACK
  - IS BUILDING ENVELOPE
  - SSSZ SINGLE STORY STRUCTURE ZONE
  - RAD. RADIUS
  - ESMT. EASEMENT
  - UTILITY EASMENT (5' FROM PROPERTY LINE UNLESS NOTED)

SURVEYED BY:  
DWIGHT C. FRANCIS  
LICENSED LAND SURVEYOR  
ST. KITTS & NEVIS

A SUBDIVISION PLAN OF  
**SANDY BANK BAY**  
PHASE 1  
SHOWING  
**95 RESIDENTIAL LOTS**

SANDY BANK BAY  
ST. KITTS PENINSULA RESORT DISTRICT  
ST. KITTS, WEST INDIES  
PREPARED FOR:  
CHRISTOPHE HARBOUR  
DEVELOPMENT COMPANY LIMITED





NOTES:

1. ALL DISTANCES SHOWN ARE GROUND. GROUND TO GRID SCALE FACTOR: 0.999965.
2. THE MEAN HIGH WATER LINE SHOWN HEREON IS REFERENCED TO THE VERTICAL DATUM "LOCAL BENCHMARK." MHWL = 0.72' (LOCAL BENCHMARK).
3. ALL LOT CORNERS AND RIGHTS-OF-WAY P.C.'S AND P.T.'S ARE TO BE WITNESSED BY CONCRETE MONUMENTS WHEREVER FEASIBLE. 5/8" REBAR, STABILIZED BY CONCRETE, IS TO BE USED OTHERWISE. ALL EASEMENTS SHOWN HEREON, INCLUDING, BUT NOT LIMITED TO DRAINAGE AND UTILITY EASEMENTS, ARE GRANTED AND/OR RESERVED UNTO CHRISTOPHE HARBOUR DEVELOPMENT COMPANY LIMITED, ITS SUCCESSORS, ASSIGNS AND/OR DESIGNEES, AND/OR OTHER DESIGNATED PARTIES AS SET FORTH IN AND PURSUANT TO THE DECLARATION OF COVENANTS, CONDITIONS AND RESTRICTIONS FOR CHRISTOPHE HARBOUR (THE "MASTER COVENANTS") AND THE OTHER GOVERNING DOCUMENTS (AS DEFINED IN THE MASTER COVENANTS), AS THEY MAY BE MODIFIED, AMENDED AND/OR SUPPLEMENTED FROM TIME TO TIME.
4. IN ACCORDANCE WITH THE MASTER COVENANTS AND THE OTHER GOVERNING DOCUMENTS, AS THEY MAY BE MODIFIED, AMENDED AND/OR SUPPLEMENTED FROM TIME TO TIME, ALL IMPROVEMENT SETBACKS, BUILDING ENVELOPES AND SINGLE STORY STRUCTURE ZONES SHOWN HEREON RESPECTING LOTS ARE SUBJECT TO CHANGE AND ALTERATION BY THE CHRISTOPHE HARBOUR DESIGN REVIEW BOARD TO ACCOMMODATE INDIVIDUAL HOME DESIGNS AND HOMESITE CHARACTERISTICS.

LEGEND

- CALCULATED POINT (NO MONUMENT SET)
- △ PROPERTY CORNER AT MEAN HIGH WATER (NO MONUMENT SET)
- PROPERTY CORNER TO BE SET (5/8" REBAR, STABILIZED WITHIN CONCRETE, OR 4" CONCRETE MONUMENT)
- IS IMPROVEMENT SETBACK
- BE BUILDING ENVELOPE
- SSSZ SINGLE STORY STRUCTURE ZONE
- RAD. RADIUS
- ESMT. EASEMENT
- UTILITY EASEMENT (5' FROM PROPERTY LINE UNLESS NOTED)

SURVEYED BY:  
DWIGHT C. FRANCIS  
LICENSED LAND SURVEYOR  
ST. KITTS & NEVIS

**A SUBDIVISION PLAN OF  
SANDY BANK BAY  
PHASE 1  
SHOWING  
95 RESIDENTIAL LOTS**

SANDY BANK BAY  
ST. KITTS PENINSULA RESORT DISTRICT  
ST. KITTS, WEST INDIES

PREPARED FOR:  
**CHRISTOPHE HARBOUR  
DEVELOPMENT COMPANY LIMITED**

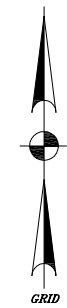
50 0 25 50 100  
SCALE: 1 INCH = 100 FEET  
FEBRUARY 1, 2010

SHEET 3 OF 7 D-2663

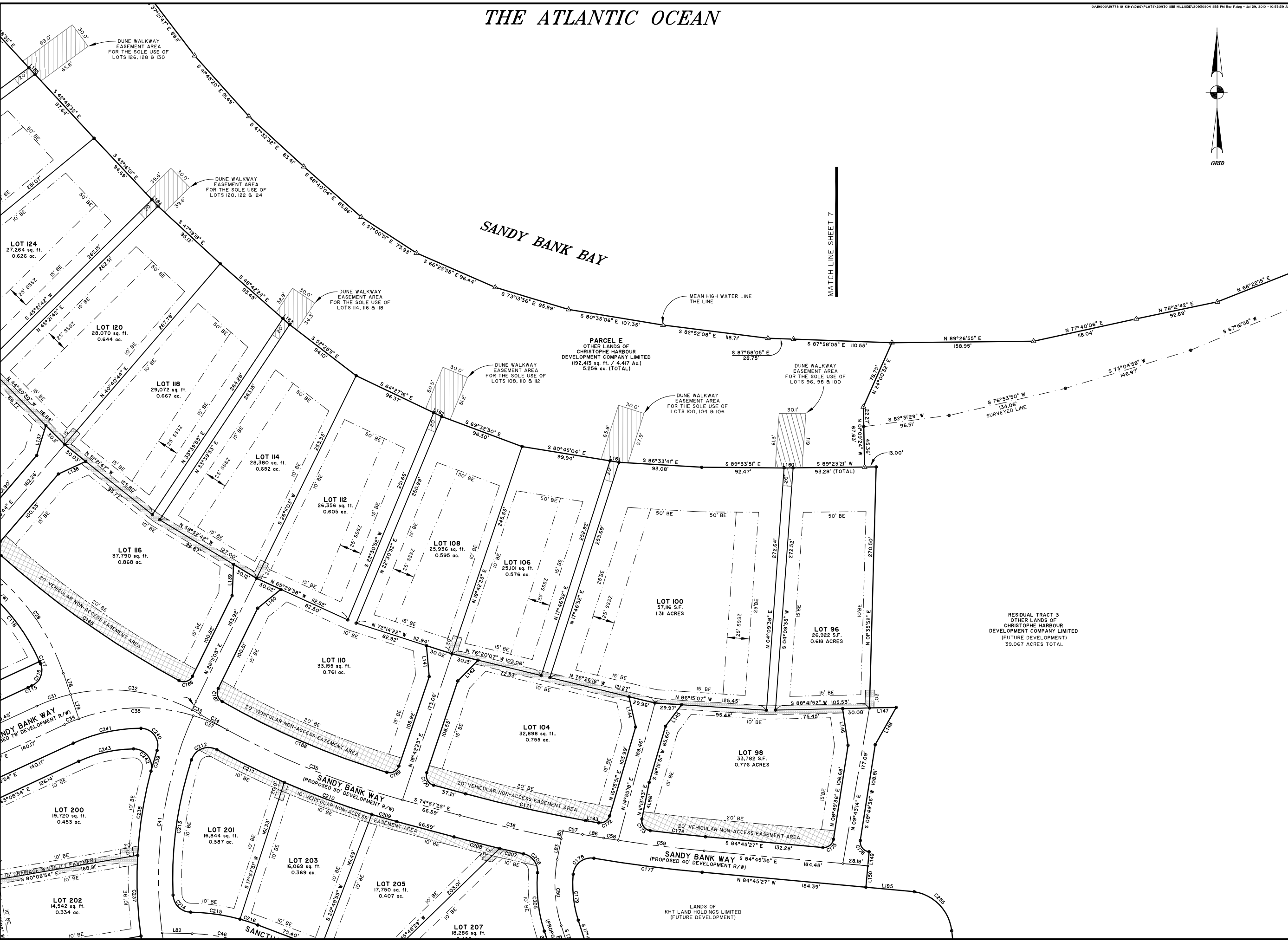
# THE ATLANTIC OCEAN

0:\BROUW776 ST KITTS\DWG\PLANS\20930 SBB HLL\DC\2093004 SBB PH Rev F.dwg - Jul 29, 2010 - 10:53:39 AM

- NOTES:
- ALL DISTANCES SHOWN ARE GROUND. GROUND TO GRID SCALE FACTOR: 0.999915.
  - THE MEAN HIGH WATER LINE SHOWN HEREON IS REFERENCED TO THE VERTICAL DATUM "LOCAL BENCHMARK." MHWL = 0.72' (LOCAL BENCHMARK).
  - ALL LOT CORNERS AND RIGHTS-OF-WAY P.C.'S AND P.T.'S ARE TO BE WITNESSED BY CONCRETE MONUMENTS WHEREVER FEASIBLE. 5/8" REBAR, STABILIZED BY CONCRETE, IS TO BE USED OTHERWISE.
  - ALL EASEMENTS SHOWN HEREON, INCLUDING, BUT NOT LIMITED TO DRAINAGE AND UTILITY EASEMENTS, ARE GRANTED AND/OR RESERVED UNTO CHRISTOPHE HARBOUR DEVELOPMENT COMPANY LIMITED, ITS SUCCESSORS, ASSIGNS AND/OR DESIGNEES, AND/OR OTHER DESIGNATED PARTIES AS SET FORTH IN AND PURSUANT TO THE DECLARATION OF COVENANTS, CONDITIONS AND RESTRICTIONS FOR CHRISTOPHE HARBOUR (THE "MASTER COVENANTS") AND THE OTHER GOVERNING DOCUMENTS (AS DEFINED IN THE MASTER COVENANTS), AS THEY MAY BE MODIFIED, AMENDED AND/OR SUPPLEMENTED FROM TIME TO TIME.
  - IN ACCORDANCE WITH THE MASTER COVENANTS AND THE OTHER GOVERNING DOCUMENTS, AS THEY MAY BE MODIFIED, AMENDED AND/OR SUPPLEMENTED FROM TIME TO TIME, ALL IMPROVEMENT SETBACKS, BUILDING ENVELOPES AND SINGLE STORY STRUCTURE ZONES SHOWN HEREON RESPECTING LOTS ARE SUBJECT TO CHANGE AND ALTERATION BY THE CHRISTOPHE HARBOUR DESIGN REVIEW BOARD TO ACCOMMODATE INDIVIDUAL HOME DESIGNS AND HOMESITE CHARACTERISTICS.



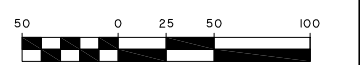
- LEGEND
- △ CALCULATED POINT (NO MONUMENT SET)
  - ▲ PROPERTY CORNER AT MEAN HIGH WATER (NO MONUMENT SET)
  - PROPERTY CORNER TO BE SET (5/8" REBAR, STABILIZED WITHIN CONCRETE, OR 4" CONCRETE MONUMENT)
  - IS IMPROVEMENT SETBACK
  - BE BUILDING ENVELOPE
  - SSSZ SINGLE STORY STRUCTURE ZONE
  - RAD. RADIUS
  - ESMT. EASEMENT
  - UTILITY EASMENT (5' FROM PROPERTY LINE UNLESS NOTED)



SURVEYED BY:  
DWIGHT C. FRANCIS  
LICENSED LAND SURVEYOR  
ST. KITTS & NEVIS

A SUBDIVISION PLAN OF  
**SANDY BANK BAY**  
PHASE 1  
SHOWING  
**95 RESIDENTIAL LOTS**

SANDY BANK BAY  
ST. KITTS PENINSULA RESORT DISTRICT  
ST. KITTS, WEST INDIES  
PREPARED FOR:  
CHRISTOPHE HARBOUR  
DEVELOPMENT COMPANY LIMITED



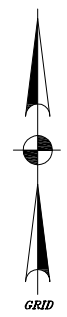
SCALE: 1 INCH = 100 FEET  
FEBRUARY 1, 2010





- NOTES:**
1. ALL DISTANCES SHOWN ARE GROUND. GROUND TO GRID SCALE FACTOR: 0.999615.
  2. THE MEAN HIGH WATER LINE SHOWN HEREON IS REFERENCED TO THE VERTICAL DATUM "LOCAL BENCHMARK." MHWL = 0.72' (LOCAL BENCHMARK).
  3. ALL LOT CORNERS AND RIGHTS-OF-WAY P.C.'S AND P.T.'S ARE TO BE WITNESSED BY CONCRETE MONUMENTS WHEREVER FEASIBLE. 5/8" REBAR, STABILIZED BY CONCRETE, IS TO BE USED OTHERWISE.
  4. ALL EASEMENTS SHOWN HEREON, INCLUDING, BUT NOT LIMITED TO DRAINAGE AND UTILITY EASEMENTS, ARE GRANTED AND/OR RESERVED UNTO CHRISTOPHE HARBOUR DEVELOPMENT COMPANY LIMITED, ITS SUCCESSORS, ASSIGNS AND/OR DESIGNES, AND/OR OTHER DESIGNATED PARTIES AS SET FORTH IN AND PURSUANT TO THE DECLARATION OF COVENANTS, CONDITIONS AND RESTRICTIONS FOR CHRISTOPHE HARBOUR (THE "MASTER COVENANTS") AND THE OTHER GOVERNING DOCUMENTS (AS DEFINED IN THE MASTER COVENANTS), AS THEY MAY BE MODIFIED, AMENDED AND/OR SUPPLEMENTED FROM TIME TO TIME.
  5. IN ACCORDANCE WITH THE MASTER COVENANTS AND THE OTHER GOVERNING DOCUMENTS, AS THEY MAY BE MODIFIED, AMENDED AND/OR SUPPLEMENTED FROM TIME TO TIME, ALL IMPROVEMENT SETBACKS, BUILDING ENVELOPES AND SINGLE STORY STRUCTURE ZONES SHOWN HEREON RESPECTING LOTS ARE SUBJECT TO CHANGE AND ALTERATION BY THE CHRISTOPHE HARBOUR DESIGN REVIEW BOARD TO ACCOMMODATE INDIVIDUAL HOME DESIGNS AND HOMESITE CHARACTERISTICS.

- LEGEND**
- CALCULATED POINT (NO MONUMENT SET)
  - △ PROPERTY CORNER AT MEAN HIGH WATER (NO MONUMENT SET)
  - PROPERTY CORNER TO BE SET (5/8" REBAR, STABILIZED WITHIN CONCRETE, OR 4" CONCRETE MONUMENT)
  - IS IMPROVEMENT SETBACK
  - BE BUILDING ENVELOPE
  - SSSZ SINGLE STORY STRUCTURE ZONE
  - RAD. RADIUS
  - ESMT. EASEMENT
  - [Symbol] UTILITY EASEMENT (5' FROM PROPERTY LINE UNLESS NOTED)



SURVEYED BY:  
DWIGHT C. FRANCIS  
LICENSED LAND SURVEYOR  
ST. KITTS & NEVIS

A SUBDIVISION PLAN OF  
**SANDY BANK BAY**  
PHASE 1  
SHOWING  
**95 RESIDENTIAL LOTS**

SANDY BANK BAY  
ST. KITTS PENINSULA RESORT DISTRICT  
ST. KITTS, WEST INDIES  
PREPARED FOR:  
**CHRISTOPHE HARBOUR**  
DEVELOPMENT COMPANY LIMITED

